

NOVA SERIES

NEW FOR 2018!

Introducing the only hub cover kits designed exclusively for Western Star trucks and dealers!



INNOVATION
INSPIRATION
IMAGINATION

DAIMLER-AUTHORIZED WESTERN STAR LOGO HUB COVER KITS!

**EXCLUSIVE
24-MONTH
WARRANTY**

APPLICATIONS

- Fits Most 22.5" & 24.5" Aluminum & Steel Wheels
- Fits most 10-Lug Wheels with Standard 11.25" Bolt Circle.
- 33mm Thread-On Application
- Fits Steel and Aluminum Wheels
- Class 7/8 Trucks & Trailers

AMERICAN TRUCK
TECHNOLOGY

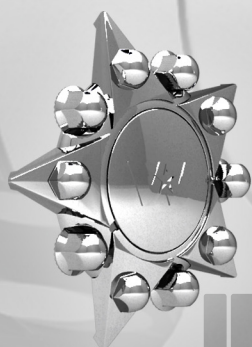
NOVA SERIES

BOLD NEW LOOK!



NOVA REAR

10 LUG CHROME ABS
REAR HUB COVER SYSTEM
FITS MOST 22.5" & 24.5"
ALUMINUM & STEEL WHEELS
10.16202.001WS (WITH WS LOGO)



NOVA FRONT

10 LUG CHROME ABS
FRONT HUB COVER SYSTEM
FITS MOST 22.5" & 24.5"
ALUMINUM & STEEL WHEELS
INCLUDES SHORT STUD ADAPTOR KIT
AND 33MM PUSH-ON NUT COVERS
10.16102.001WS (WITH WS LOGO)

FEATURES

HIGH-QUALITY CHROME PLATING

Commercial-quality plating won't rust, chip, peel, flake or discolor.

HEAT-RESISTANT

Automotive-grade PC/ABS material won't warp, wrinkle or sag.

DURABLE

Rugged polymer construction. Won't dent or ding and resists impacts from most common road debris.

INDUSTRY-LEADING WARRANTY

24-month warranty protects your investment and provides peace of mind.

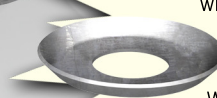
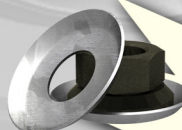
D.O.T. COMPLIANT

Large removable center cap for easy access to hub for road-side inspections.

EASY INSTALLATION

Installs simply and easily by threading on to existing wheel studs.
No modification to wheel is necessary.

SHORT STUD KIT INCLUDED!



The Western Star Nova Front hub cover ships with our Short Stud Conversion Kit which includes galvanized steel washers and 33mm push-on nut covers needed for the steer axles on many of the newer Western Star truck models.

Short Stud Conversion Kit is also available separately.
10.90045.000



2772 Golfview Drive, Unit B, Naperville, IL 60563

sales@americantrucktechnology.com

Toll Free: 1-800-985-0168

www.americantrucktechnology.com



Razor 225

Omega

Spyder 225

Check out our other innovative new styles!